

UNITEC

The Universal Splicing System

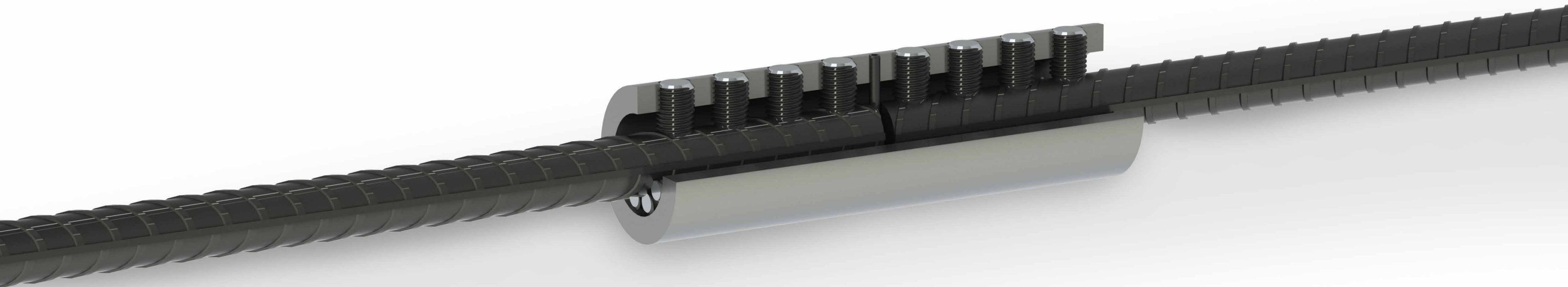


Dextra

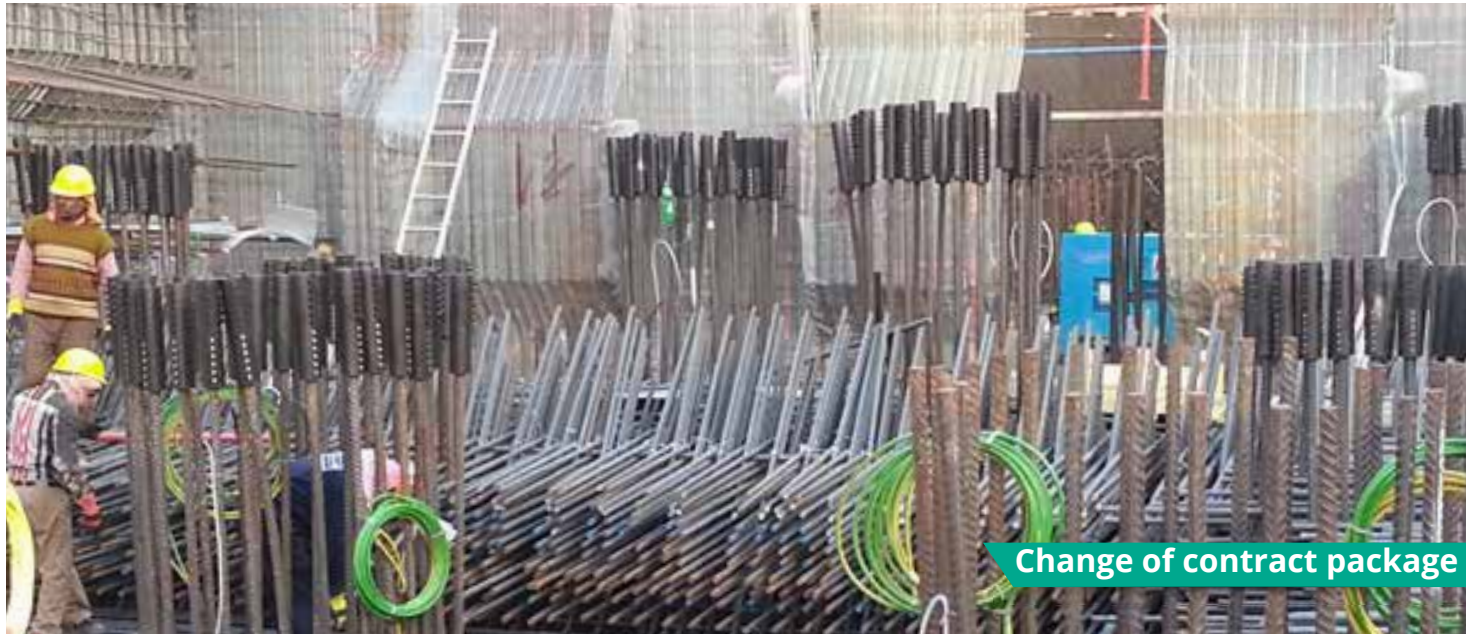
www.dextragroup.com

Benefits

- Site assembly with standard impact wrench.
- No need of bar end preparation.
- Readily available off the shelf.
- Ideal for concrete-embedded bars, repair and retrofit works, bent bars, etc.
- Type 2 splice as per ACI 318 requirements.
- Complies with BS 8110 and NF A35-020 standards.



Applications



Quality assurance



TH015960



QSC-706

Dextra's Quality Management System complies with the requirements of:

- Bureau Veritas ISO 9001:2015 - TH010882
- UK CARES ISO 9001:2015 - 1086
- ASME QSC-706

Each coupler is marked with symbols that enable to trace back to each raw material and production batch data.

Approvals & Certifications

Unitec couplers have been certified by the following authorities:



IAPMO UES ER-702



003-1/143-2020



Z-1.3-288

- IAPMO for use with bar size #4 through #14:
 - ASTM A615 grade 60, 75 and 80
 - ASTM A705 grade 60 and 80
 - ISO 6935-2 grade B500B
- UK CARES for use with grade B500B and B500C and bars Ø 12 to 40mm as per BS 4449.
- UK CARES for use with grade B500C and bars Ø 16 to 40mm as per BS 4449.
- AFCAB for use with grade B500B and bars Ø 12 to 40mm as per NF A35080.
- Dubai Municipality Approval for bars Ø 12 to 40mm grade 500.
- Romania Technical Approval number 003-1/143-2020 for use with bars Ø 12 to 40mm.
- Australian Technical Approval for bars Ø 20 to 36mm as per A5660406.
- DIBt for use with grade B500B and bars Ø 12 to 28mm as per DIN 488-1.



Resources



Brochure



Assembly instruction



Certification

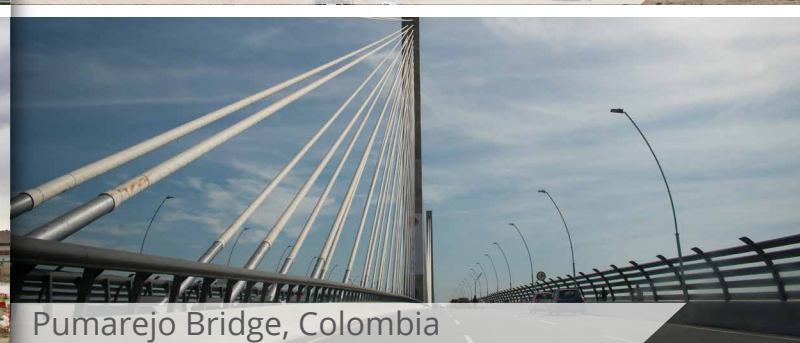


Case study



Webpage

Project References



Connect with us



www.dextragroup.com





Commercial presence
in more than
55 countries



Dextra

www.dextragroup.com/contact

Note:

The information in this catalogue is considered up to date at the time of publication. We reserve the right to make technical and design changes at any time.

Dextra shall not accept liability for the accuracy of the information in this publication or for any printing errors.

Main offices (click on the address to see more information)

HEADQUARTERS THAILAND
Dextra Manufacturing Co., Ltd.
Tel: (66) 2 021 3800

CHINA
Dextra Building Products (Guangdong) Co., Ltd.
Tel: (86) 20 2261 9901

HONG KONG
Dextra Pacific Ltd.
Tel: (852) 2511 8236

EUROPE
Dextra Europe SARL.
Tel: (33) 1 45 53 70 82

MIDDLE EAST
Dextra Middle-East FZE
Tel: (971) 4886 5620

INDIA
Dextra India Pvt. Ltd.
Tel: (91) 22 2839 2694

NORTH AMERICA
Dextra America Inc.
Tel: (1) 206 742 6020

LATIN AMERICA
Dextra Latam
Tel: (507) 6454 8100