

Technical data sheet

Fibre concrete spacers for lattice girders

Application:

MAX FRANK AU fibre concrete spacers and lattice girders are used for combined floor slabs and for steel fibre concrete with welded wire mesh.

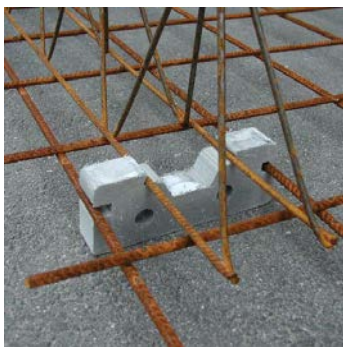
Quality control:

The fibre concrete spacer fulfils the criteria of DIN 1045, WU guidelines and the requirements defined in the DBV instruction sheet.

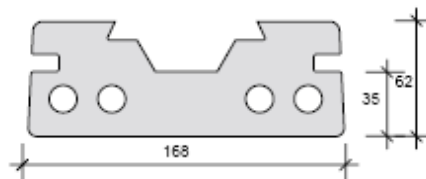
Handling:

The upper reinforcement is installed together with a specifically load-adapted lattice girder and protected against tilting. The lower reinforcement can additionally be laid on the fibre concrete spacers. Thus, only one MAX FRANK fibre concrete spacer type allows for installation of all applications, i.e. with and without lattice girder, with and without upper and lower reinforcement and at the same time this spacer ensures the required concrete cover.

View:



Detailed view:



Spacers for lattice girders: Different concrete cover available on request

Article number	Concrete cover Reinforcement	Concrete cover Lattice girder	Cutting width	Weight kg / pce.	Price € / pce.
AU 3552	35 mm	52 mm	30 mm	0.43	On request

Lattice girders: Other sizes available on request

Article number	Height	Length	Weight per U-girder	Price € / pce.
AUT 15	15 cm	2.00 m	2.14 kg	On request

Calculation of required quantity:

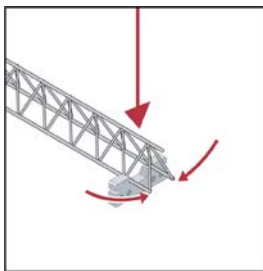
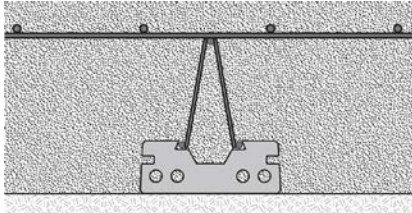
		Laying distance girders in m	Pcs. / m ²
AU3552	3 pcs. / girder	0.70	2.0
AUT15		0.70	0.7
AU3552	3 pcs. / girder	0.50	3.0
AUT15		0.50	1.0

Max Frank GmbH & Co. KG

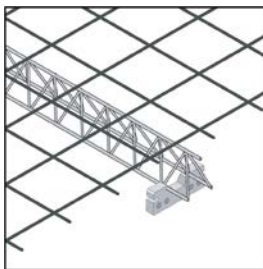
Mitterweg 1 | 94339 Leiblfing | Germany | Telefon +49 9427 189-0 | Telefax +49 9427 1588 | info@maxfrank.com

Instructions for laying MAX FRANK lattice girders in floor slabs:

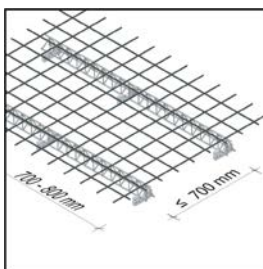
A: Installation with upper reinforcement



A1: The lattice girders are clamped into the fibre concrete spacer (3 pieces per girder)



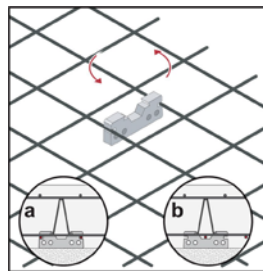
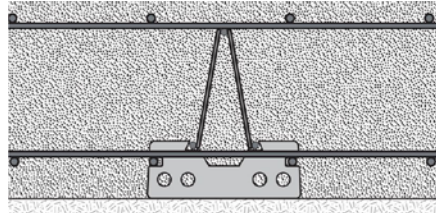
A2.: Place upper reinforcement mat.



A3: Observe maximum installation distance between lattice girders and fibre concrete spacers

Max Frank GmbH & Co. KG

B: Installation with upper and lower reinforcement

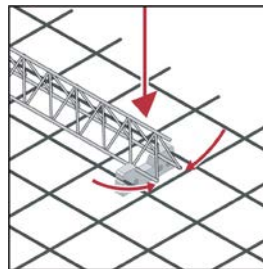


B1: Lower reinforcement either

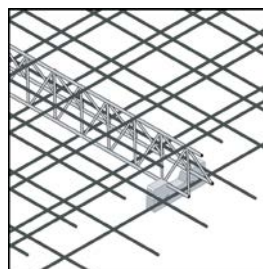
- a) The fibre concrete spacer is screwed in between the bars (only possible for certain mesh types)
- b) A rebar is placed into the middle recess

Attention:

Always put on the lower rebar of the welded wire mesh.



B2: The lattice girders are clamped into the spacer



B3: Observe maximum laying distance. Put on upper reinforcement.